

9.2 Probe List

The ultrasound image scanner uses probes to obtain graphic data of the human body and then displays it on the screen. Always use application-specific probes in order to obtain the best quality images. It is also important to configure the probe with the best settings for the particular organ being scanned.

Probe	Application	Preset
C2-5EL	Abdomen	Aorta, Appendix, General, Renal
	Gynecology	Adnexa, Endometrium, General, Uterus
	OB	Early, Fetal Heart, General
C3-7EP	Abdomen	Aorta, Appendix, General, Renal
	Gynecology	Adnexa, Endometrium, General, Uterus
	OB	Early, Fetal Heart, General
HL5-12ED	Muskuloskeletal	Elbow/Wrist, General, Hand/Foot, Shoulder/Knee
	Pediatric	Abdomen, General,
	Small Parts	Breast, General, Superficial, Testicle, Thyroid
	Vascular	Arterial, Carotid, General, Venous
L5-12EC	Muskuloskeletal	Elbow/Wrist, General, Hand/Foot, Shoulder/Knee
	Pediatric	Abdomen, General,
	Small Parts	Breast, General, Superficial, Testicle, Thyroid
	Vascular	Arterial, Carotid, General, Venous
L5-12/50EP	Muskuloskeletal	Elbow/Wrist, General, Hand/Foot, Shoulder/Knee
	Abdomen	Abdomen, General,
	Small Parts	Breast, General, Superficial, Testicle, Thyroid
	Vascular	Arterial, Carotid, General, Venous
P2-4AH	Abdomen	Aorta, General, Renal
	Cardiac	Aortic arch, General
	Pediatric Cardiology	Aortic arch, General
	TCD	General
P3-5AC	Abdomen	Aorta, General, Renal
	Cardiac	Aortic arch, General
	Pediatric Cardiology	Aortic arch, General
	TCD	General

Probe	Application	Preset
NER4-9ES	Gynecology	Adnexa, Endometrium, General, Uterus
	OB	Cervix, Fetal Heart, General
	Urology	Bladder, General, Prostate
NEV4-9ES	Gynecology	Adnexa, Endometrium, General, Uterus
	OB	Cervix, Fetal Heart, General
	Urology	Bladder, General, Prostate
3D2-6ET	Abdomen	Aorta, Appendix, General, Renal
	Gynecology	Adnexa, Endometrium, General, Uterus
	OB	Early, Fetal Heart, General
3D4-8EK	Abdomen	Aorta, Appendix, General, Renal
	Gynecology	Adnexa, Endometrium, General, Uterus
	OB	Fetal Heart, Cervix, General
3D4-8ET	Abdomen	Aorta, Appendix, General, Renal
	Gynecology	Adnexa, Endometrium, General, Uterus
	OB	Fetal Heart, Cervix, General
3D5-9EK	Gynecology	Adnexa, Endometrium, General, Uterus
	OB	Early, Fetal Heart, General
	Urology	Bladder, General, Prostate
CW2.0	Cardiac	General
CW4.0	Cardiac	General
	Pediatric Cardiology	General



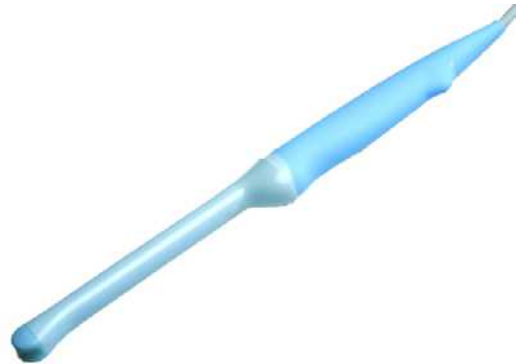
3D4-8ET & 3D2-6ET



L5-12/50EP



NEV4-9ES



NER4-9ES

[Figure 9-1] Medison New Probe

9.3 Thermal Index (TI) Tables

TI values displayed on the screen title bar can change depending on probes and applications. SONOACE X8 decides automatically which TI value will be displayed out of TIs, TIb, and TIc. The TI values are as follows,

Probe	Applications												
	General	Obstetrics	Gynecology	Abdomen	Pediatric Abdomen	Cardiac	Pediatric Cardiology	Urology	Vascular	Small Parts	Musculoskeletal	TCD	
C2-5EL	TIs	TIb	TIs	TIs	TIb								
C3-7EP	TIs	TIb	TIs	TIs	TIb								
HL5-12D	TIs			TIs			TIs		TIs	TIs	TIs		
L5-12EC	TIs			TIs			TIs		TIs	TIs	TIs		
L5-12/50EP	TIs			TIs			TIs		TIs	TIs	TIs		
P2-4AH	TIs			TIs		TIs						TIc	
P3-5AC	TIs			TIs		TIs						TIc	
NER4-9ES	TIs	TIb	TIs					TIs					
NEV4-9ES	TIs	TIb	TIs					TIs					
3D2-6ET	TIs	TIb	TIs	TIs	TIb								
3D5-8EK	TIs	TIb	TIs	TIs	TIb								
3D4-8ET	TIs	TIb	TIs	TIs	TIb								
3D5-9EK	TIs	TIb	TIs	TIs	TIb								
CW2.0	TIs					TIs							
CW4.0	TIs					TIs							